



INVESTIMENTOS
PRODUCT CATALOGUE
2023



INDEX

PAGE 1-2:	HEAD PROTECTION/FACE PROTECTION RANGE
PAGE 3-5:	EYE PROTECTION RANGE
PAGE 6-7:	HEARING PROTECTION RANGE
PAGE 8-10:	RESPIRATORY PROTECTION RANGE
PAGE 11-15:	WORKWEAR/THERMAL RANGE
PAGE 16-17:	GENERAL WORKWEAR RANGE
PAGE 18-19:	REFLECTIVE/HI-VIZ RANGE
PAGE 20-25:	HAND PROTECTION RANGE
PAGE 26-31:	FOOT PROTECTION RANGE
PAGE 32-35:	HILSEN FALL ARREST RANGE
PAGE 36:	DISPOSABLE WEAR RANGE
PAGE 37:	FIRST AID RANGE
PAGE 38:	FIRE SAFETY RANGE
PAGE 39:	LIFTING EQUIPMENT RANGE
PAGE 40:	CLEANING MATERIALS RANGE
PAGE 41:	VEHICLE/ROAD SAFETY RANGE

HEAD PROTECTION RANGE



Safety Hat
Code: 100 000

Available in white, dark blue, yellow, orange, red, green or grey

SABS approved

Box quantity: 20



Safety Hat with Ratchet Liner
Code: 100 005

Available with plastic or webbing harness. Available in white, dark blue, yellow, orange, red or green

SABS approved

Box quantity: 20



Safety Cap
Code: 100 001

Available in white, dark blue, yellow, orange, red, green, grey, pink, hi-viz, black or purple

DME certified

Box quantity: 20



Safety Cap with Ratchet Liner
Code: 100 006

Available in white, dark blue, yellow, orange, red, green, lime, grey, hi-viz or navy blue

DME certified

Box quantity: 20



Double Crown Safety Hat
Code: 100 002

Full brim double crown safety hat with 6-point lining, Available in white, blue, red, orange or green

SABS approved

Box quantity: 20



Short Brim Safety Cap
Code: 100 007

Available in white, blue, red, orange, yellow, green or grey

SABS approved

Box quantity: 20



Nikki Safety Cap
Code: 100 003

Available in white, yellow, orange, red, blue, pink, green or black

SABS approved

Box quantity: 20



Uvex Pheos Safety Cap
Code: 100 008

Industrial peaked safety cap with 6-point ratchet lining. Available in white, yellow, orange, green or blue

SABS approved

Box quantity: 20



Forestry Helmet
Code: 100 004

Industrial peaked safety cap complete with clip on earmuffs, gauze or clear polycarbonate visor

Box quantity: 10



Bump Cap
Code: 100 009

Industrial bump cap with 4 point lining. Available in white, yellow, orange, red, green, navy blue or black

Box quantity: 20



HEAD PROTECTION RANGE



Bushmaster Face Shield
Code: 101 000

Available in polycarbonate or clear lens
Box quantity: 1



Aluminium Face Shield
Code: 101 005

Short and long aluminium cap and hat attachment face shield holder
Box quantity: 1



Foundry Face Shield
Code: 101 001

Fibreglass head gear with clear polycarbonate lens
Box quantity: 1



Maxi-Guard Face Shield
Code: 101 006

25mm elastic headband, 25mm x 30mm cell foam sweat band
Box quantity: 1



Medical Face Shield
Code: 101 002

Clear face shield, foam head protector, protection against dust and liquids
Box quantity: 1



Maxi Face Shield
Code: 101 007

Brow guard and headgear, cap and hat clip-on, chemical resistant with clear or green lens
Box quantity: 1



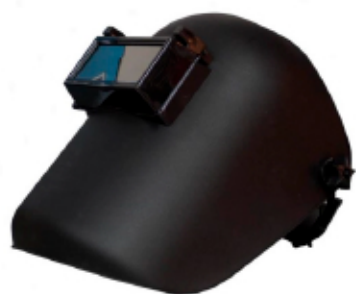
Face Shield
Code: 101 003

Clear polycarbonate visor, impact resistant, chemical splash isolation with brow guard
Box quantity: 1



Premium Face Shield
Code: 101 008

Polycarbonate visor, impact resistant, chemical splash isolation and heat resistant. Available in clear or green lens
Box quantity: 1



Standard Welding Helmet
Code: 101 004

Standard front flip, spare headgear and lens available, adjustable headband
Box quantity: 1



Auto-Darkening Welding Helmet
Code: 101 009

Solar powered auto-darkening lens, adjustable headgear, replacement protective lens
ANSI approved
Box quantity: 1



EYE PROTECTION RANGE



Classic
Code: 102 000

Polycarbonate dual lens, anti-fog and scratch resistant. Available in clear or grey lens

EN166 F CE

Box quantity: 12



Sporty
Code: 102 005

Polycarbonate mono lens, anti-scratch and anti-glare. Available in clear, grey, green or amber lens

EN166 F CE

Box quantity: 12



Euro
Code: 102 001

Polycarbonate mono lens, anti-glare and scratch resistant. Available in clear, grey, green or amber lens

EN166 F CE

Box quantity: 12



Euro-Weld
Code: 102 006

Polycarbonate mono lens, compatible with respiratory equipment, scratch resistant.

EN166 F CE

Box quantity: 12



Focus
Code: 102 002

Polycarbonate dual lens, anti-fog and scratch resistant. Available in red, blue or yellow frame

EN166 F CE

Box quantity: 12



Spoggle
Code: 102 007

Inner attachment for prescription lens, polycarbonate mono lens, compatible with respiratory equipment.

EN166 F CE

Box quantity: 12



Maxi-View
Code: 102 003

Indirect ventilation system, compatible with respiratory equipment, anti-fog and scratch resistant lens

EN166 3, 4, 9, FN

Box quantity: 12



Wide-Vision
Code: 102 008

Clear polycarbonate mono lens, indirect dual ventilation, high quality polyvinyl chloride frame

EN166 FCE

Box quantity: 12



Wildland
Code: 102 004

Fire resistant polycarbonate lens with anti-scratch and anti-fog visibility

NFPA 1977:2016

Box quantity: 12



Welding
Code: 102 009

Polycarbonate mono lens, indirect ventilation system, anti-scratch and anti-mist lens

EN175:1997

Box quantity: 12



EYE PROTECTION RANGE



Classic
Code: 102 010

Anti-glare, anti-fog and scratch resistant lens. Available in clear or grey lens

EN166 F

Box quantity: 12



Classic Spoggle
Code: 102 015

Polycarbonate lens, helmet/ bump cap can be worn, scratch proof and anti-fog lens. Available in clear or grey lens

EN166 F

Box quantity: 12



SP Spoggle
Code: 102 011

Scratch proof and anti-fog interior, polycarbonate lens with a wide range of vision

EN166 F

Box quantity: 12



Euro-Spec
Code: 102 016

Polycarbonate mono lens, fits with respiratory equipment, anti-glare and scratch resistant. Available in clear, grey, green or amber lens

EN166 F

Box quantity: 12



Laser
Code: 102 012

Polycarbonate lens, anti-fog, anti-glare and scratch resistant. Available in clear or grey lens

EN166 F

Box quantity: 12



O-Vision
Code: 102 017

Polycarbonate frame and lens, soft nose seat, scratch resistant. Available in grey, amber, clear or green lens

EN166 F

Box quantity: 12



Sporty Anti-Fog
Code: 102 013

Polycarbonate mono lens, anti-fog, anti-glare and scratch resistant. Available in clear or amber lens

EN166 F

Box quantity: 12



Wrap-Around
Code: 102 018

Polycarbonate mono lens and temples with ventilation, compatible with prescription glasses. Available in clear, green or amber lens

EN166 F

Box quantity: 12



Indirect Vent
Code: 102 014

Indirect dual ventilation system, scratch resistant and anti-fog

EN166 F

Box quantity: 12



Brazing/Welding
Code: 102 019

Shade 5 lens, indirect ventilation system, compatible with respiratory equipment

Box quantity: 12



EYE PROTECTION RANGE



i-Guard Spectacles
Code: 102 020

Anti-fog and scratch resistant polycarbonate lens, metal-free. Available in anthracite or blue

EN 166

Box quantity: 12



i-Guard + Goggles
Code: 102 025

Anti-fog and scratch resistant polycarbonate lens, metal-free. Available in anthracite or blue

EN 166

Box quantity: 12



SuXceed Safety Glasses
Code: 102 021

Anti-fog and scratch resistant polycarbonate lens, metal-free. Available in anthracite and blue

EN 166

Box quantity: 12



X-Fit Safety Spectacles
Code: 102 026

Anti-fog, scratch resistant, chemical resistant, hinged side-arm design

EN 166

Box quantity: 12



i-Lite Safety Glasses
Code: 102 022

Anti-fog and scratch resistant polycarbonate lens, metal-free. Available in anthracite or blue

EN 166

Box quantity: 12



Sportsyle Spectacles
Code: 102 027

Featherlite, anti-fog interior, adjustable nose piece, polycarbonate lens. Available in black or petrol

EN 166

Box quantity: 12



Pheos CX2 Spectacles
Code: 102 023

Compatible with bump caps, hard hats and ear defenders. Anti-fog scratch and chemical resistant. Available in black or light blue

EN 166

Box quantity: 12



Pheos Guard Spectacles
Code: 102 028

Duo-spherical lens, metal-free, adapted headband, scratch-proof interior, anti-scratch exterior, compatible with hard hats and bump caps

EN 166

Box quantity: 12



Astrospec 2.0 Spectacles
Code: 102 024

Anti-fog interior, scratch and chemical resistant exterior, panoramic polycarbonate lens, ventilation system

EN 166

Box quantity: 12



i-VO Spectacles
Code: 102 029

Anti-fog interior, scratch and chemical resistant, soft components for comfort. Available in blue or orange

EN 166

Box quantity: 12



HEARING PROTECTION RANGE



Disposable Earplugs
Code: 103 000

Smooth foam, PU coated for hygiene, high visibility

CE EN 352-2

Box quantity: Per pair



Corded Reusable Earplugs
Code: 103 005

Detachable chord, easy to insert. Suitable for steel cutting, grinding and machinery

CE EN 352-2

Box quantity: Per pair



Detectable Reusable Earplugs
Code: 103 001

Lightweight, waterproof, comfortable in humid areas, detachable cord

CE EN 352-2

Box quantity: Per pair



Disposable Corded Earplugs
Code: 103 006

Soft foam, high visibility, expands to fit ear, excellent attenuation

CE EN 352-2

Box quantity: Per pair



Boxed Reusable Earplugs
Code: 103 002

Detachable cord, easy to insert, high visibility

CE EN 352-2

Box quantity: Per pair



Banded Reusable Earplugs
Code: 103 007

Detachable cord, easily insertable, high visibility

CE EN 352-2

Box quantity: Per pair



Blue Corded Reusable Earplugs
Code: 103 003

Detachable cord, easily insertable, high visibility

CE EN 352-2

Box quantity: Per pair



Interex Earmuffs
Code: 103 008

Twin point mounted cups, easily attachable, compatible with hard hats, adjustable cups

CE EN 352-3

Box quantity: 1



Classic Extreme Earmuffs
Code: 103 004

Twin point mounted cups, long periods of hearing protection, large cups with foam cushions

CE EN 352-1

Box quantity: 1



Bushmaster with Visor
Code: 103 009

Twin point mounted cups, long periods of hearing protection, adjustable visor

CE EN 352-1

Box quantity: 1



HEARING PROTECTION RANGE



Corded Disposable Earplugs
Code: 103 010

PU foam material, standard noise reduction levels

CE EN 352-2

Box quantity: Per pair



Corded Reusable Earplugs
Code: 103 015

Corded silicone earplugs, blue and orange for good visibility

CE EN 352-2

Box quantity: Per pair



Corded Reusable Earplugs
Code: 103 011

Reusable corded earplugs, four flange TPR earplug, high visibility colour

CE EN 352-2

Box quantity: Per pair



Foam Earplugs
Code: 103 016

Individually packed, universal fit, high visibility, optimal expansion rate for comfort

CE EN 352-2

Box quantity: Per pair



Hi-Viz Bullet Earplugs
Code: 103 012

High visibility green and blue earplugs

CE EN 352-2

Box quantity: Per pair



Earmuffs
Code: 103 017

Polycarbonate earmuffs, foam filled cushions. Available in blue or red

EN 352-1

Box quantity: 1



Over-Ear Earmuffs
Code: 103 013

Economic style, plastic cups with foam liner and foam cushions, plastic headband

EN 352-1

Box quantity: 1



Over-Head Earmuffs
Code: 103 018

ABS cups with foam liner and foam filled cushions for comfort and noise protection, metal headband

EN 352-1

Box quantity: 1



Over-Head Earmuffs
Code: 103 014

Plastic cups with foam liner and foam cushions, folding headband for practicality

EN 352-1

Box quantity: 1



Sonic Defender Earmuffs
Code: 103 019

Twin mounted self-adjusting cups, can be worn with a safety helmet

EN 352-1

Box quantity: 1



RESPIRATORY PROTECTION RANGE



FFP2 Econo 2001
Code: 104 000

Protection against solid and liquid non-volatile particles

EN149:2001

Box quantity: 20



FFP2 Premium Valved 9201
Code: 104 005

Protection against solid and liquid non-volatile particles with exhalation valve

EN149:2001

Box quantity: 15



FFP2 Econo Cup Style 3001
Code: 104 001

Protection against solid and liquid non-volatile particles

EN149:2001

Box quantity: 20



FFP2 Premium 5000
Code: 104 006

Protection against solid and liquid non-volatile particles with fluid resistant outer layer

EN149:2001

Box quantity: 20



FFP2 Premium Carbon Valved
Code: 104 002

Protection against solid and liquid non-volatile particles with exhalation valve and activated carbon media

EN149:2001

Box quantity: 5



FFP2 Econo Valved 2002
Code: 104 007

Protection against solid and liquid non-volatile particles with exhalation valve

EN149:2001

Box quantity: 15



FFP2 Premium Carbon Valved 9202
Code: 104 003

Protection against solid and liquid non-volatile particles with exhalation valve and activated carbon media

EN149:2001

Box quantity: 15



FFP2 Premium 9200
Code: 104 008

Protection against solid and liquid non-volatile particles

EN149:2001

Box quantity: 20



FFP3 Premium Valved 9300
Code: 104 004

Protection against solid and liquid non-volatile particles with exhalation valve

EN149:2001

Box quantity: 15



FFP2 Pro Welder 9400
Code: 104 009

Protection against solid and liquid non-volatile particles with exhalation valve and activated carbon media

EN149:2001

Box quantity: 5



RESPIRATORY PROTECTION RANGE



Airm maxx Disposable Dust Mask FFP2
Code: 104 010

Polyester respirator with adjustable nose clip, protection against solid and liquid aerosols

EN149:2001

Box quantity: 20



Airm maxx Disposable Valved Dust Mask FFP2
Code: 104 015

Polyester respirator with adjustable nose clip, protection against solid and liquid aerosols

EN149:2001

Box quantity: 12



Airm maxx Disposable Active Carbon Mask FFP2
Code: 104 011

Rubber exhalation valve with 5-layer non-woven polyester, protection against welding fumes and dust

EN149:2001

Box quantity: 12



Airm maxx Disposable Mask FFP1
Code: 104 016

Aluminium nose clip, latex free head straps, protection against dust and solid/liquid aerosols

EN149:2001

Box quantity: 20



FFP2 Disposable Valved Mask
Code: 104 012

Inner foam seal with adjustable head straps with plastic valve

EN149:2001

Box quantity: 20



FFP2 Disposable Mask
Code: 104 017

Inner foam seal with adjustable head straps

EN149:2001

Box quantity: 20



KN95 Disposable Mask
Code: 104 013

Non-woven, eco-friendly, comfortable, lightweight, easy breathing

GB2626:2006

Box quantity: 25



FFP1 Disposable Mask
Code: 104 018

Aluminium nose clip, foam nose seal, suitable for cutting, sanding and drilling

EN149:2001

Box quantity: 20



Airtech FFP2 Disposable Mask
Code: 104 014

Lightweight and easy to fit disposable mask with comfortable breathing

EN149:2001

Box quantity: 20



FFP3 Dust Mask/Valved
Code: 104 019

Inner foam seal, adjustable head straps, plastic valve reducing hot air build up

EN149:2001

Box quantity: 10



RESPIRATORY RANGE PROTECTION CHART

CLASS:	THRESHOLD:	DESCRIPTION:
FFP1	4X	Basic protection against non-toxic solid and liquid particles, nor fibrosis associated, nor carcinogenic, nor risk group 3 airborne substances, nor enzymes
FFP2	10X	Intermediate protection against hazardous and harmful vapor and smoke particles, not radioactive, nor risk group 3 airborne substances, nor enzymes
FFP3	30X	High protection against poisonous particles, vapor and smoke, solid and liquid aerosols with high filtering classification, bacteria, viruses and radioactive materials, risk group 3 airborne substances



FACE MASKS & CARTRIDGES



Twin Half Mask
Code: 105 000

Deep face mould with efficient exhalation and adjustable head strap, quick release toggle

NRCS AZ2011/46

Box quantity: 1



Full Face Mask
Code: 105 005

Polycarbonate, anti-fog and impact-resistant visor, adjustable head harness and exhalation valve

Box quantity: 1



PVC Twin Half Mask
Code: 105 001

Deep face mould with soft PVC and a quick release toggle

SNRCS AZ2011/45

Box quantity: 1



Single Half Mask
Code: 105 006

Deep face mould with soft PVC and a quick release toggle

NRCS AZ2011/43

Box quantity: 1



Twin B1 Unfit Filter
Code: 105 002

Valve replaced with every filter, inorganic gases

EN14387:2004

Box quantity: 1



Twin P3 Unfit Filter
Code: 105 007

Valve replaced with every filter, particle gases

EN143:2000

Box quantity: 1



Twin Abek1 Unfit Filter
Code: 105 003

Valve replaced with every filter, organic, inorganic, acid and ammonia gases

EN14387:2004

Box quantity: 1



Single A1 Unfit Filter
Code: 105 008

Valve replaced with every filter, organic gases

EN141:2000

Box quantity: 1



Single P2 Unfit Filter
Code: 105 004

Valve replaced with every filter, particle gases

EN143:2003

Box quantity: 1



Twin A1 Unfit Filter
Code: 105 009

Valve replaced with every filter

EN14387:2004

Box quantity: 1



VULCAN WORKWEAR RANGE



Vulcan Standard Conti Suit Code: 106 000

Standard polycotton conti suit.
Available in blue, green, grey,
orange, red or black

SABS approved

Box quantity: 1



Vulcan Superior Conti Suit Code: 106 003

Superior quality polycotton conti
suit. Available in blue, green, grey
orange or red.

SABS approved

Box quantity: 1



Vulcan J54 Conti Suit Code: 106 001

100% cotton J54 conti suit.
Available in blue or navy blue

YKK approved

Box quantity: 1



Vulcan Econo Conti Suit Code: 106 004

Standard polycotton conti suit
with reflective tape. Available in
orange or blue

SABS approved

Box quantity: 1



Vulcan Denim Conti Suit Code: 106 002

Standard denim conti suit with
triple stitching

SABS approved

Box quantity: 1



Vulcan D59 Flame Jacket/ Trousers Code: 106 005

D59 premium Flame Fabric,
industrial hi-viz tape, premium
brass zips, flame retardant

Box quantity: 1 jacket or trousers



VULCAN WORKWEAR RANGE



Vulcan D59 Flame and Acid Jacket/Trousers

Code: 106 006

Sasol spec flame retardant and acid resistant jacket or trousers

SABS approved

Box quantity: 1 jacket or trousers



Vulcan Superior Conti Suit Code: 106 009

Superior quality polycotton conti suit. Available in blue, green, grey, orange or red.

SABS approved

Box quantity: 1



Vulcan 12.4 cal Du Pont Arc Jacket/Trousers

Code: 106 007

12.4 cal rated Du Pont jacket or trousers

NFPA 2112, NFPA 70E Cat 2

Box quantity: 1 jacket or trousers



Vulcan Du Pont Nomex Jacket/Trousers

Code: 106 010

Flame retardant jacket or trousers made from Du Pont Nomex fabric

NFPA 2112, NFPA 70E

Box quantity: 1 jacket or trousers



Vulcan 80/20 Acid Suit Code: 106 008

205GSM fabric, YKK zip, providing protection against acid splashes

SABS approved

Box quantity: 1



Vulcan Hi-Viz Work Jacket/Trousers

Code: 106 011

SANS434 comfy fit, YKK zip, heavyweight hi-viz fabric, fully triple stitched

Box quantity: 1 jacket or trousers



JAVLIN WORKWEAR RANGE



Javlin Reflective Conti Suit Code: 107 000

Standard J54 conti suit with reflective tape. Available in black, grey, blue, red or orange

SABS approved

Box quantity: 1



Javlin Denim Conti Suit Code: 107 005

Stone washed denim conti suit with triple needle stitching

SABS approved

Box quantity: 1



Javlin Hi-Viz Construction Conti Suit Code: 107 001

Reflective tape, triple needle stitching. Available in blue or red

Box quantity: 1



Javlin Two Tone Polycotton Conti Suit Code: 107 006

Polycotton material with pockets, triple needle stitched to increase durability

Box quantity: 1



Javlin Acid Resistant Conti Suit Code: 107 002

Polycotton material made to SABS spec, tripled needle stitched. Available in green or blue

SABS approved

Box quantity: 1



Javlin D59 Conti Jacket Code: 107 007

Flame retardant conti jacket, triple needle stitched for durability

SABS approved

Box quantity: 1



Javlin Polycotton Boiler Suit Code: 107 003

Polycotton material, manufactured to SABS spec, triple needle stitched. Available in blue or white

SABS approved

Box quantity: 1



Javlin Reflective Boiler Suit Code: 107 008

100% cotton with reflective tape and triple needle stitching

SABS approved

Box quantity: 1



Javlin SABS Boiler Suit Code: 107 004

Flame retardant and acid retardant with reflective tape

SABS approved

Box quantity: 1



Javlin Dust Coat Code: 107 009

Polycotton material. Available in blue, green, grey, red or white

Box quantity: 1



JONSSON WORKWEAR RANGE



Jonsson Versatex Jacket
Code: 108 000

Made from Versatex polycotton. Available in red, blue, black, green, khaki, grey or orange

Box quantity: 1



Jonsson Versatex Trousers
Code: 108 005

Made from Versatex polycotton. Available in red, blue, black, green, khaki, grey or orange

Box quantity: 1



Jonsson Versatex Reflective Jacket
Code: 108 001

Made from Versatex polycotton with reflective tape for visibility

Box quantity: 1



Jonsson Versatex Reflective Trousers
Code: 108 006

Made from Versatex polycotton with reflective tape for visibility

Box quantity: 1



Jonsson 100% Cotton Jacket
Code: 108 002

Comfortable and breathable with side slits for comfortable movement. Available in blue or navy blue

Box quantity: 1



Jonsson 100% Cotton Trousers
Code: 108 007

Comfortable and breathable with elastic in the waistband for comfortable movement. Available in blue or navy blue

Box quantity: 1



Jonsson Flame Retardant Jacket
Code: 108 003

Chemically treated to resist heat and sparks, reflective tape for visibility. Available in green or navy blue

SABS approved

Box quantity: 1



Jonsson Flame Retardant Trousers
Code: 108 008

Chemically treated to resist heat and sparks, reflective tape for visibility. Available in green or navy blue

SABS approved

Box quantity: 1



Jonsson Acid Resistant Jacket
Code: 108 004

Chemically treated to repel acid and oil splashes, reflective tape for visibility

Box quantity: 1



Jonsson Acid Resistant Trousers
Code: 108 009

Chemically treated to repel acid and oil splashes, reflective tape for visibility

Box quantity: 1



FREEZER & THERMAL RANGE



Hi-Viz Freezer Jacket
Code: 109 000

Water resistant, heavy duty lining and padding, reflective tape. Available in hi-viz orange or yellow.

Box quantity: 1



Reflective Freezer Jacket
Code: 109 005

Water resistant, heavy duty padding and lining, reflective tape. Available in black and navy blue.

Box quantity: 1



Reflective Freezer Trousers
Code: 109 001

Water resistant, heavy duty lining and padding, reflective tape. Available in black or navy blue.

Box quantity: 1



Freezer Jacket
Code: 109 006

Water resistant, heavy duty lining and padding, elasticated cuffs. Available in black or navy blue

Box quantity: 1



1-Piece Freezer Suit
Code: 109 002

Water resistant, heavy duty padding and lining, elasticated cuffs, 2 slanted pockets

Box quantity: 1



Long Sleeve Thermal Shirt
Code: 109 007

65/35 polycotton long sleeve round neck thermal shirt. Available in black or white

Box quantity: 1



Thermal Long John Pants
Code: 109 003

65/35 polycotton thermal long john pants, available in black or white

Box quantity: 1



Women's Thermal Long Johns
Code: 109 008

65/35 polycotton thermal long johns designed for women. Available in black or white

Box quantity: 1



Women's Thermal Long Top
Code: 109 004

65/35 polycotton thermal long top designed for women. Available in black or white

Box quantity: 1



Freezer Socks
Code: 109 009

100% acrylic freezer socks made for heat retention

Box quantity: 1



WORKWEAR/OVERALLS

SIZING CHART

MEN

	TOPS:							
SIZE:	XS	S	M	L	XL	2XL	3XL	4XL
CHEST CM:	72-77	82-87	92-97	102-107	112-117	122-127	132-137	142-147
CHEST INCHES:	28-30	32-34	36-38	40-42	44-46	48-50	52-54	56-58

	BOTTOMS:												
SIZE:	28	30	32	34	36	38	40	42	44	46	48	50	52
WAIST CM:	72	77	82	87	92	97	102	107	112	117	122	127	132
WAIST INCHES:	28	30	32	34	36	38	40	42	44	46	48	50	52

WOMEN

	TOPS:							
SIZE:	XS	S	M	L	XL	2XL	3XL	4XL
BUST CM:	74-79	84-89	94-99	104-109	114-119	124-129	134-139	144-149
BUST INCHES:	28-30	32-34	36-38	40-42	44-46	48-50	52-54	56-58

	BOTTOMS:												
SIZE:	28	30	32	34	36	38	40	42	44	46	48	50	
WAIST CM:	59	64	69	74	79	84	89	94	99	104	109	114	
WAIST INCHES:	23	25	27	29	31	33	35	37	39	41	43	45	
HIPS CM:	84	89	94	99	104	109	114	119	124	129	134	139	
HIPS INCHES:	33	35	37	39	41	43	45	47	49	51	53	55	

JONSSON GENERAL WORKWEAR RANGE



Jonsson Cotton Long Sleeve Shirt

Code: 110 000

Available in white, light blue, black, olive green, khaki, navy blue or red

Box quantity: 1



Jonsson Legendary Long Sleeve Shirt

Code: 110 005

Breathable short sleeve work shirt with reflective tape. Available in yellow and blue or orange and blue

Box quantity: 1



Jonsson Check Short Sleeve Shirt

Code: 110 001

Available in check black, check navy blue and check light blue

Box quantity: 1



Jonsson Short Sleeve Cotton Shirt

Code: 110 006

Available in white, light blue, black, olive green, navy blue, red or grey

Box quantity: 1



Jonsson Legendary Short Sleeve Shirt

Code: 110 002

Available in check blue, check khaki, check turquoise or check red

Box quantity: 1



Jonsson Flat Front Chino

Code: 110 007

High visibility work shirt with a vented back. Available in orange and navy or yellow and navy

Box quantity: 1



Jonsson Heavy Duty Trousers

Code: 110 003

Available in navy blue, khaki, dark grey or olive green

Box quantity: 1



Jonsson Ripstop Trousers

Code: 110 008

Available in navy blue, light brown, khaki, olive green or black

Box quantity: 1



Jonsson Versatex Cargo Pants

Code: 110 004

Available in dark grey, navy blue, olive green and khaki

Box quantity: 1



Jonsson Versatex Chino

Code: 110 009

Available in black, khaki, navy blue and light grey

Box quantity: 1



JAVLIN GENERAL WORKWEAR RANGE



Javlin Long Sleeve Work Shirt
Code: 111 000

Regular fit long sleeve shirt.
Available in blue or white

Box quantity: 1



Javlin Ituri Cargo Pants
Code: 111 005

Available in khaki or olive green

Box quantity: 1



Javlin Kariba Cargo Pants
Code: 111 001

Available in khaki, olive green or brown

Box quantity: 1



Javlin Journey Chino
Code: 111 006

Available in khaki or brown

Box quantity: 1



Javlin Trailblazer Cargo Pants
Code: 111 002

Available in khaki, olive green or brown

Box quantity: 1



Platinum T-Shirt
Code: 111 007

Available in black, red, green, dark grey, light grey or white

Box quantity: 1



Lightweight T-Shirt
Code: 111 003

Available in black, grey, lime green, navy blue, orange, red, yellow or white

Box quantity: 1



Heavyweight T-Shirt
Code: 111 008

Available in pink, black, green, brown, navy blue, orange, red, purple, yellow or white

Box quantity: 1



Dry Fit T-Shirt
Code: 111 004

Available in black, navy blue, orange, light blue, white or yellow

Box quantity: 1



Dry Fit Golf Shirt
Code: 111 009

Available in black, navy blue, red, light blue or white

Box quantity: 1



REFLECTIVE WORK SHIRTS/BUNNY JACKETS



Jonsson Long Sleeve Work Shirt

Code: 112 000

High visibility long sleeve work shirt. Available in yellow and blue or orange and blue

Box quantity: 1



Jonsson Short Sleeve Work Shirt

Code: 112 005

Breathable short sleeve work shirt with reflective tape. Available in yellow and blue or orange and blue

Box quantity: 1



Jonsson Versatex Lite Work Shirt

Code: 112 001

Comfortable high visibility work shirt. Available in blue and charcoal, orange and blue or yellow and blue

Box quantity: 1



Jonsson Vented Work Shirt

Code: 112 006

High visibility work shirt with cotton vents. Available in orange and blue or yellow and blue

Box quantity: 1



Javlin Long Sleeve Work Shirt

Code: 112 002

High visibility work shirt with reflective tape. Available in blue and navy, orange and navy or yellow and navy

Box quantity: 1



Javlin Vented Work Shirt

Code: 112 007

High visibility work shirt with a vented back. Available in orange and navy or yellow and navy

Box quantity: 1



Javlin Vented Work Shirt

Code: 112 003

High visibility work shirt with a vented back. Available in orange and navy or yellow and navy

Box quantity: 1



Javlin Two-Tone Golfer

Code: 112 008

Breathable with quick dry fabric, contrasting collar and bottom panel. Available in orange and navy or lime and navy

Box quantity: 1



Viz-Pro Bunny Jacket

Code: 112 004

Waterproof fabric with polyester padding, reflective tape and zip-off sleeves. Available in black, blue, orange and hi-viz lime

Box quantity: 1



Viz-Pro Bunny Jacket

Code: 112 009

Waterproof fabric with polyester padding, reflective tape and zip-off sleeves. Available in black, orange, blue or hi-viz lime

Box quantity: 1



REFLECTIVE BIBS & WAIST COATS



Signalling Vest
Code: 113 000

High visibility vest with a nylon zip. Available in lime, red, pink, blue or orange

ISO20471:2013

Box quantity: 1



Signalling Vest
Code: 113 005

High visibility vest with reflective tape and polyester mesh. Available in lime or orange

EN149:2001

Box quantity: 1



LED Light Reflective Vest
Code: 113 001

High visibility vest with LED lights and Velcro for adjustments, batteries not included

Box quantity: 1



Adjustable Reflective Vest
Code: 113 006

Five way adjustable high visibility vest with Velcro attachments

EN149:2001

Box quantity: 1



Reflective Mesh Bib
Code: 113 002

High visibility vest with polyester mesh and reflective tape. Available in orange or lime

EN:20471

Box quantity: 1



Reflective Solid Bib
Code: 113 007

High visibility vest with polyester mesh and reflective tape. Available in lime or orange

EN:20471

Box quantity: 1



Reflective Premium Bib
Code: 113 003

High visibility, heavy duty lime bib with reflective tape

Box quantity: 1



Reflective Tape 100m
Code: 113 008

Orange hi-viz reflective tape in a 100m roll.

Box quantity: 50



Reflective Tape 100m
Code: 113 004

Lime hi-viz reflective tape in a 100m roll

Box quantity: 50



Reflective Tape 200m
Code: 113 009

Silver reflective tape in a 200m roll or 50m roll. Available in silver or hi-viz lime

Box quantity: 10



REFLECTIVE BIBS & WAIST COATS



Latex Splendor

Code: 114 000

Good for general handling in wet or dry areas, natural rubber with a crinkle finish



Guardian Angel Nitrifoam Dipped Glove

Code: 114 005

Oil resistant, high flexibility, abrasion protection and good grip

Box quantity: By pair



Guardian Angel Dipped PVC Crayfish Glove

Code: 114 001

PVC dipped cotton glove ideal for handling items that may puncture

Box quantity: By pair



Guardian Angel Dipped Rubber Latex Glove

Code: 114 006

Natural rubber dipped glove, crinkle finish, fleece lined with knit cuff or safety cuff

Box quantity: By pair



Dipped Crayfish Glove

Code: 114 002

Durable with excellent grip, cotton lined and dipped in rubber

Box quantity: By pair



Dipped PU Coated Glove

Code: 114 007

Smooth PU coating for excellent grip in general handling use

Box quantity: By pair



Dipped Green Latex Glove

Code: 114 003

Latex coated general handling glove with excellent grip, cotton lined knit wrist

Box quantity: By pair



Dipped Tru Touch Glove

Code: 114 008

Rough nitrile coating for excellent grip in general handling use

Box quantity: By pair



Dipped Saracen Glove

Code: 114 004

Anti-grip coating, re-enforced palm and thumb, for construction and mining

Box quantity: By pair



Splendor Life Dipped Glove

Code: 114 009

Excellent grip for dry or wet conditions, suitable for tire fitment, agriculture, floor tiling and carpentry

Box quantity: By pair



COATED CUT RESISTANT GLOVE RANGE



Guardian Angel Cut Resistant Glove
Code: 114 010

High cut resistance and abrasion resistance, heat resistant with good grip and air circulation

Box quantity: By pair



Tru Touch Cut 5 Glove
Code: 114 015

Excellent comfort and durability, Nylon inner and double dipped PU coating for good grip

Box quantity: By pair



Cut 5 Nitrile Glove
Code: 114 011

Nylon and Dyneema cut 5 inner with a double dipped nitrile exterior

Box quantity: By pair



Cut Force Glove
Code: 114 016

High cut protection, heat resistant, perspiration absorbent with knuckle and finger protection

Box quantity: By pair



Kevlar/Cotton Cut Resistant Glove
Code: 114 012

Cut resistant Kevlar with good handling and air circulation

Box quantity: By pair



Heat Cut Single Kevlar Glove
Code: 114 017

Heat and abrasion protection with high performance Kevlar

Box quantity: By pair



Heat Cut Kevlar Glove
Code: 114 013

Heat and abrasion protection with high performance Kevlar for cut resistance

Box quantity: By pair



Cutmaster Volcano
Code: 114 018

Excellent grip properties, high flexibility and comfort, cut resistance level 5

Box quantity: By pair



PU Ultracut 5 Glove
Code: 114 014

High cut protection and excellent flexibility with smooth PU coating on palm

Box quantity: By pair



Kevlar/Cotton Cut Resistant Glove
Code: 114 019

High cut resistance and flame resistance

Box quantity: By pair



LEATHER GLOVE RANGE



Blue Lined Leather Glove Code: 114 020

Leather glove with blue lining and yellow palm

Box quantity: By pair



Mustard Yellow Leather Glove Code: 114 025

Leather glove with mustard yellow and green lining

Box quantity: By pair



Heat Resistant Leather Glove Code: 114 021

Pink leather glove made for heat resistance

Box quantity: By pair



Heat Resistant Leather Glove Code: 114 026

Red leather glove made for heat resistance

Box quantity: By pair



Leather Lined Welding Glove Code: 114 022

Leather lined glove made for welding safety

Box quantity: By pair



Leather Reinforced Welding Glove Code: 114 027

Leather glove made for excellent protection while welding

Box quantity: By pair



Leather Tig Welding Glove Code: 114 023

14-inch welding glove with an extended goatskin cuff

Box quantity: By pair



Leather Goatskin Glove Code: 114 028

Goatskin welding glove with excellent fingertip sensitivity

Box quantity: By pair



Chrome Leather Striped Glove Code: 114 024

Chrome leather glove accented with candy stripes, good for handling

Box quantity: By pair



Chrome Leather Apron Gloves Code: 114 029

Chrome leather apron palm welding gloves. Available in 2.5 inch or 8 inch.

Box quantity: By pair



PVC CHEMICAL GLOVE RANGE



Blue Nitrile PVC Glove
Code: 114 030

Excellent grip for use in oily and wet environments with a single dip coating

Box quantity: By pair



Green Nitrile Chemical Glove
Code: 114 035

PVC glove providing protection against acids, bases and solvents

Box quantity: By pair



Knit Wrist PVC Glove
Code: 114 031

Green PVC reinforced glove for good grip and handling

Box quantity: By pair



Open Cuff PVC Glove
Code: 114 036

Green PVC reinforced glove for good grip and handling

Box quantity: By pair



Heavy-Duty PVC
Code: 114 032

Smooth finish, excellent abrasion and tear resistance, for both wet and dry application. Available in 35cm or 40cm.

Box quantity: By pair



Open Cuff PVC Glove
Code: 114 037

Red PVC glove made for good handling and protection

Box quantity: By pair



Sandy Finish PVC Glove
Code: 114 033

Sandy finish PVC open cuff glove for handling and slip protection

Box quantity: By pair



Double Dipped PVC Glove
Code: 114 038

Elbow length PVC glove for increased protection and good general handling

Box quantity: By pair



Black Chip PVC Glove
Code: 114 034

Designed for increased grip in general manufacturing with knit wrist and cotton lining

Box quantity: By pair



Extra Heavyweight PVC Glove
Code: 114 039

Designed for extra grip and protection in general manufacturing. Available in knit cuff, open cuff or elbow length

Box quantity: By pair



COTTON GLOVE RANGE



Double Dotted Cotton Glove
Code: 114 040

Machine knitted for comfort and protection, grip assistance with knitted cuff

Box quantity: By pair



Cotton Glove
Code: 114 045

Cotton blend knitted glove for hand protection and general maintenance

Box quantity: By pair



Cotton Glove
Code: 114 041

Knitted wrist glove with good comfort and protection for general maintenance

Box quantity: By pair



Cotton Glove
Code: 114 046

800GM cotton glove, comfortable and lightweight with superior dexterity

Box quantity: By pair



Cotton Glove
Code: 114 042

450GM cotton glove, comfortable and lightweight with superior dexterity

Box quantity: By pair



Cotton Towelling Glove
Code: 114 047

40cm cross knitted towelling glove for light duty protection

Box quantity: By pair



Cotton Lined Glove
Code: 114 043

Light abrasion protection suitable for all industries

Box quantity: By pair



Grey Cotton Glove
Code: 114 048

Light abrasion protection suitable for all industries

Box quantity: By pair



Cotton Polka-Dot Glove
Code: 114 044

Lightweight and comfortable cotton glove with PVC dotted palm for extra grip

Box quantity: By pair



Taiwan Crochet Lined Cotton Glove
Code: 114 049

Light abrasion protection with good air circulation for comfort

Box quantity: By pair



DISPOSABLE GLOVE RANGE



Golden Hands Black Nitrile Code: 114 050

For tattoo, motor, salon and medical industry, finger and palm textured for grip

ASTM D3578-10

Box quantity: 50 pairs



Golden Hands Blue Nitrile Code: 114 055

Synthetic rubber, high puncture resistance, excellent choice for medical fields

ASTM D3578-10

Box quantity: 50 pairs



Golden Hands Light Blue Nitrile Code: 114 051

Synthetic rubber, high puncture resistance, chemical protection, water and oil proof

ASTM D3578-10

Box quantity: 50 pairs



Golden Hands White Latex Code: 114 056

Premium grade natural rubber latex, powdered and non-sterile

ASTM D3578-10

Box quantity: 50 pairs



Golden Hands Powdered Sterile Latex Code: 114 052

Sterile gloves that are latex and disposable

Box quantity: 50 pairs



Golden Hands Powder Free Sterile Latex Code: 114 057

Sterile latex non-powdered gloves that are disposable

Box quantity: 50 pairs



Golden Hands Latex Powder Free Code: 114 053

Premium grade natural rubber latex, powder free and high durability

ASTM D3578-10

Box quantity: 50 pairs



Latex Examination Gloves Code: 114 058

100% latex examination gloves, good durability and good tear resistance

Box quantity: 50 pairs



Blue Nitrile Examination Gloves Code: 114 054

Disposable blue nitrile examination gloves

Box quantity: 50 pairs



Disposable Deli Glove Code: 114 059

Good durability, strong and comfortable.

Box quantity: 50 pairs



REBEL FOOT PROTECTION RANGE



Rebel Kontrakta Boot
Code: 115 000

Steel toe, genuine leather, oil resistant, shock absorbent, slip resistant

ISO 20345

Box quantity: 1 Pair



Rebel Chukka Boot
Code: 115 005

Steel toe, genuine leather, oil resistant, reflective tape, shock absorbent, slip resistant

ISO 20345

Box quantity: 1 Pair



Rebel Crazy Horse Boot
Code: 115 001

Steel toe, genuine leather, heat resistant, oil resistant, shock absorbent, slip resistant. Available in tan, brown or black

ISO 20345

Box quantity: 1 Pair



Rebel Havok Boot
Code: 115 006

Steel toe, anti-penetration, genuine leather, heat resistant, oil and slip resistant, shock absorbent

ISO 20345

Box quantity: 1 Pair



Rebel Chemitrak S3 Boot
Code: 115 002

Steel toe, anti-penetration, chemical resistant, heat and oil resistant, water resistant and shock absorbent

ISO 20345

Box quantity: 1 Pair



Rebel Expedition Boot
Code: 115 007

Steel toe, anti-penetration, genuine leather, oil and slip resistant, water resistant, shock absorbent.

ISO 20345

Box quantity: 1 Pair



Rebel Jigga Boot
Code: 115 003

Composite toe cap, arc flash, genuine leather, heat and oil resistant, shock absorbent. Available in black or brown

ISO 20345

Box quantity: 1 Pair



Rebel Chelsea Boot
Code: 115 008

Steel toe, anti-penetration, oil and slip resistant, shock absorbent. Available in black or brown

ISO 20345

Box quantity: 1 Pair



Rebel Dynapro Shoe
Code: 115 004

Non-metallic, composite toe, oil and slip resistant, microfiber

ISO 20345

Box quantity: 1 Pair



Rebel Enduro-Max Shoe
Code: 115 009

Steel toe, electrostatic discharge, genuine leather, heat and oil resistant, slip resistant, shock absorbent

ISO 20345

Box quantity: 1 Pair



KALIBER FOOT PROTECTION RANGE



Kaliber Raptor Safety Boot
Code: 115 010

Steel toecap, steel midsole, shock absorbent sole, oil resistant and anti-slip outsole

ISO 20345

Box quantity: 1 Pair



Kaliber Jackal Safety Boot
Code: 115 015

Buffalo leather upper, steel toecap, shock absorbent sole, oil resistant and anti-slip outsole

ISO 20345

Box quantity: 1 Pair



Kaliber Condor Safety Boot
Code: 115 011

Steel toecap, steel midsole, shock absorbent, oil resistant and anti-slip outsole

ISO 20345

Box quantity: 1 Pair



Kaliber Hawk Safety Boot
Code: 115 016

Steel toecap, reflective bar on rear, shock absorbent sole and anti-slip

ISO 20345

Box quantity: 1 Pair



Kaliber Volcano S2 Safety Boot
Code: 115 012

Steel toecap, shock absorbent, heat resistant, oil and water resistant

ISO 20345

Box quantity: 1 Pair



Kaliber Chelsea Safety Boot
Code: 115 017

Steel toecap, steel midsole, shock absorbent sole, lightweight. Available in brown or black

ISO 20345

Box quantity: 1 Pair



Kaliber Guardian Boot
Code: 115 013

Genuine leather upper, padded collar, lightweight. Available in brown or black

Box quantity: 1 Pair



Kaliber Kronos Boot
Code: 115 018

Buffalo leather upper, steel toecap, shock absorbent, padded collar

Box quantity: 1 Pair



Kaliber Patriot Boot
Code: 115 014

Genuine leather upper, lightweight, padded collar. Available in brown or black

Box quantity: 1 Pair



Kaliber Velocity Safety Shoe
Code: 115 019

Lightweight mesh upper, steel toecap, shock absorbent sole, oil resistant and anti-slip

ISO 20345

Box quantity: 1 Pair



BOVA FOOT PROTECTION RANGE



Bova Neogrip Safety Boot Code: 115 020

Full grain leather, perspiration absorbent lining, steel toecap, heat resistant sole, steel midsole available

ISO 20345

Box quantity: 1 Pair



Bova Neoflex Safety Boot Code: 115 025

Full grain leather, perspiration absorbent lining, steel toecap, heat resistant sole, steel midsole available

ISO 20345

Box quantity: 1 Pair



Bova Bremen Safety Boot Code: 115 021

Full grain leather, perspiration absorbent lining, steel toecap, heat resistant sole, steel midsole available

ISO 20345

Box quantity: 1 Pair



Bova Maverick Safety Boot Code: 115 025

Genuine leather, steel toecap, heat resistant, steel midsole available

ISO 20345

Box quantity: 1 Pair



Bova Drogue Safety Boot Code: 115 022

Full grain waxy leather, perspiration absorbent lining, anti-penetration midsole, steel toecap, heat resistant sole

ISO 20345

Box quantity: 1 Pair



Bova Nebula Safety Boot Code: 115 026

Full grain leather, perspiration absorbent lining, anti-penetration midsole, steel toecap, heat resistant rubber sole

ISO 20345

Box quantity: 1 Pair



Bova Hamburg Safety Shoe Code: 115 023

Suede leather, perspiration absorbent lining, steel toecap, heat resistant sole

ISO 20345

Box quantity: 1 Pair



Bova Amathole Safety Shoe Code: 115 027

Full grain leather, perspiration absorbent lining, steel toecap, heat resistant sole, anti-penetration midsole available

ISO 20345

Box quantity: 1 Pair



Bova Smelters Safety Boot Code: 115 024

Full grain leather, heat resistant lining, heat resistant sole, aluminium toecap

ISO 20345

Box quantity: 1 Pair



Bova Welders Safety Boot Code: 115 028

Full grain leather, Kevlar blended lining, steel toecap, heat resistant sole, anti-penetration midsole available

ISO 20345

Box quantity: 1 Pair



SISI FOOT PROTECTION RANGE



Sisi Angelina Safety Shoe
Code: 115 029

Abrasion protection, water resistant, heat and slip resistant

ISO 20345

Box quantity: 1 Pair



Sisi Jennifer Safety Shoe
Code: 115 034

Abrasion resistant, water resistant, heat and slip resistant

ISO 20345

Box quantity: 1 Pair



Sisi Nicole Safety Shoe
Code: 115 030

Abrasion resistant, water resistant, heat and slip resistance

ISO 20345

Box quantity: 1 Pair



Sisi Selena Safety Shoe
Code: 115 035

Abrasion resistant, water resistant, heat and slip resistant

ISO 20345

Box quantity: 1 Pair



Sisi Venice Safety Shoe
Code: 115 031

Water resistant, heat resistant and slip resistant

ISO 20345

Box quantity: 1 Pair



Sisi Sydney Safety Shoe
Code: 115 036

Water resistant, heat resistant, slip resistant. Available in brown or black

ISO 20345

Box quantity: 1 Pair



Sisi Cate Safety Boot
Code: 115 032

Abrasion resistant, water resistant, heat and slip resistance

ISO 20345

Box quantity: 1 Pair



Sisi Reese Safety Boot
Code: 115 037

Abrasion resistant, water resistant, heat and slip resistant

ISO 20345

Box quantity: 1 Pair



Sisi Yvonne Safety Boot
Code: 115 033

Abrasion resistant, water resistant, heat and slip resistance

ISO 20345

Box quantity: 1 Pair



FOOT PROTECTION SIZING CHART

CM'S:	UK SIZES:	EU SIZES:
21.5	2	36
22.5	3	37
23.5	4	38
24	5	39
25	6	40
26	7	41
27	8	42
28	9	43
29	10	44
29.5	11	45
30.5	12	46
31	13	47
32	14	48
33	15	49



NEPTUN GUMBOOT RANGE



Stimela Gumboot
Code: 116 000

Heavy duty mining gumboot, excellent grip and sole support, steel toecap

ISO 20345

Box quantity: 1 Pair



Stimela Gumboot
Code: 116 005

Heavy duty mining gumboot, steel toecap, steel midsole with metatarsal protection, excellent grip and sole support

ISO 20345

Box quantity: 1 Pair



Stimela Gumboot
Code: 116 001

Black and grey gumboot with safety toe and midsole protection, excellent grip and sole support

ISO 20345

Box quantity: 1 Pair



Stimela Gumboot
Code: 116 006

Black and grey gumboot with safety toe, steel midsole and metatarsal protection, excellent grip and sole protection

ISO 20345

Box quantity: 1 Pair



Stimela Gumboot
Code: 116 002

White and grey gumboot with safety toe, steel midsole and metatarsal protection, excellent grip and sole support

ISO 20345

Box quantity: 1 Pair



Shova Gumboot
Code: 116 007

General purpose PVC anti-bacterial gumboot, hard wearing with excellent grip and sole support

ISO 20345

Box quantity: 1 Pair



Shova Gumboot
Code: 116 003

General purpose PVC gumboot for use in agriculture and food industry, excellent grip and sole support

ISO 20345

Box quantity: 1 Pair



Shova Gumboot
Code: 116 008

General purpose PVC gumboot for use in agriculture and food industry, excellent grip and sole support

ISO 20345

Box quantity: 1 Pair



Shova Gumboot
Code: 116 004

General purpose PVC gumboot for use in agriculture and food industry, excellent grip and sole support

ISO 20345

Box quantity: 1 Pair



Shova Gumboot
Code: 116 009

General purpose PVC gumboot for use in agriculture and food industry, excellent grip and sole support

ISO 20345

Box quantity: 1 Pair



BATA & WAYNE GUMBOOT RANGE



Bata Jobber Gumboot
Code: 116 010

Light PVC boot, high durability, water resistant and anti-slip. Available in black or white

NST S1

Box quantity: 1 Pair



Bata Jobber Mule Gumboot
Code: 116 015

Anti-slip, blood resistant and water resistant. Available in black or white

NST S1

Box quantity: 1 Pair



Bata Ladies Gumboot
Code: 116 011

Light PVC boot with high durability and slip resistant. Available in black or white

NST S1

Box quantity: 1 Pair



Bata Rhino 1 Gumboot
Code: 116 016

Heavy duty gumboot, anti-slip, oil and solvent resistant, steel toecap and steel midsole

SABS approved

Box quantity: 1 Pair



Bata Rhino 2 Gumboot
Code: 116 012

Anti-slip, fat and blood resistant, oil and solvent resistant, steel toecap. Available in white or black

SABS approved

Box quantity: 1 Pair



Bata Rhino 3 Gumboot
Code: 116 017

Strong PVC boot, slip resistant, oil and water resistant, for heavy duty environments

NST S1

Box quantity: 1 Pair



Wayne Egoli 1 Gumboot
Code: 116 013

Abrasion resistant upper, PVC sole for protection against oil and chemicals, slip resistant with steel toecap

ISO 20345

Box quantity: 1 Pair



Wayne Egoli 2 Gumboot
Code: 116 018

Abrasion resistant upper, PVC sole for protection against oil and chemicals, slip resistant with steel toecap

ISO 20345

Box quantity: 1 Pair



Wayne Egoli Metaguard Gumboot
Code: 116 014

Metatarsal protection, PVC sole protecting against oil and chemicals, steel toecap

SABS approved

Box quantity: 1 Pair



Wayne Gripper Gumboot
Code: 116 019

Abrasion resistant upper, recycled PVC sole with maximum slip resistance, quick drying lining

Box quantity: 1 Pair



HILSEN HARNESS RANGE



Basic Harness SN1
Code: 117 000

Easy to fit harness, lightweight, snap hook and single leg lanyard

SANS Approved

Box quantity: per each

Lanyard is supplied permanently attached to the harness



Basic Harness SN2
Code: 117 005

Easy to fit harness, lightweight, snap hooks and double leg lanyard

SANS Approved

Box quantity: per each

Lanyard is supplied permanently attached to the harness



Basic Harness SC1
Code: 117 001

Easy to fit harness, lightweight, single leg lanyard and scaffold hook

SANS Approved

Box quantity: per each

Lanyard is supplied permanently attached to the harness



Basic Harness SC2
Code: 117 006

Easy to fit harness, lightweight, double leg lanyard and scaffold hooks, energy absorber

SANS Approved

Box quantity: per each

Lanyard is supplied permanently attached to the harness



Basic Harness SC2 Adjustable
Code: 117 002

Easy to fit harness, lightweight, adjustable double leg lanyard with scaffold hooks, energy absorber

SANS Approved

Box quantity: per each

Lanyard is supplied permanently attached to the harness



Basic Harness Belted SC2
Code: 117 007

Easy to fit harness, lightweight, double leg lanyard and scaffold hooks, energy absorber

SANS Approved

Box quantity: per each

Lanyard is supplied permanently attached to the harness



Basic Harness SC2 (45mm Chest Strap)
Code: 117 003

Easy to fit harness, lightweight, double leg lanyard and scaffold hooks, energy absorber

SANS Approved

Box quantity: per each

Lanyard is supplied permanently attached to the harness



Basic Harness SC2 Belted (45mm Chest Strap)
Code: 117 008

Easy to fit harness, lightweight, double leg lanyard and scaffold hooks, energy absorber

SANS Approved

Box quantity: per each

Lanyard is supplied permanently attached to the harness



Performance Harness
Code: 117 004

Easy to fit harness, lightweight, padded dorsal attachment point, leg, shoulder and chest straps

SANS Approved

Box quantity: per each



Performance Harness Padded
Code: 117 009

Easy to fit harness, lightweight, padded dorsal attachment point, padded waist and leg straps

SANS Approved

Box quantity: per each



HILSEN HARNESS RANGE



Performance Harness (Belay Loops)
Code: 117 010

Easy to fit harness, padded dorsal attachment point and padded leg straps with frontal belay loops

SANS Approved

Box quantity: per each



Performance Harness (2-Point)
Code: 117 015

Easy to fit harness, padded dorsal attachment point and padded leg straps

SANS Approved

Box quantity: per each



Performance Harness (3-Point)
Code: 117 011

Padded waist belt for work positioning, padded dorsal attachment point and padded leg straps

SANS Approved

Box quantity: per each



Performance Harness X Max
Code: 117 016

X padding over shoulders, padded work positioning belt, hook-back points on chest, padded leg straps

SANS Approved

Box quantity: per each



Technical Harness (5-Point)
Code: 117 012

Padding on shoulders, waist and legs, gear loops on waist belt, frontal chest, frontal waist and waist belt attachments

SANS Approved

Box quantity: per each



Technical Harness (5-Point) QR
Code: 117 017

Padding on shoulders, waist and legs, gear loops on waist belt, dorsal, chest and waist attachments

SANS Approved

Box quantity: per each



Technical Harness (5-Point) Ascent Kit
Code: 117 013

Supplied with chest ascender and cow tails, padding on shoulders, waist and legs, gear loops on waist belt

SANS Approved

Box quantity: per each



Premium Sit Harness
Code: 117 018

Connector on waist for rope access, padded waist, padded legs, gear loops on waist

SANS Approved

Box quantity: per each



Premium Professional Harness
Code: 117 014

Fully padded, multiple adjustment options, gear loops on waist belt

SANS Approved

Box quantity: per each



Premium Elite Harness
Code: 117 019

Aluminium components, fully padded, fully adjustable

SANS Approved

Box quantity: per each



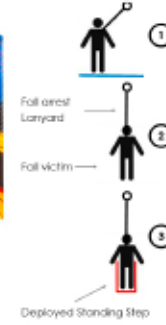
HILSEN GEAR RANGE



Harness Step Code: 117 020

Safety device to mitigate suspension trauma, fits any Hilsen harness

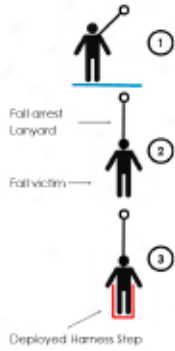
Box quantity: per each



Standing Step Code: 117 025

Safety device to mitigate suspension trauma, fits any Hilsen harness

Box quantity: per each



Component Harness Step Code: 117 021

Safety device to mitigate suspension trauma

Box quantity: per each



Gear Bag 20 Code: 117 026

Water resistant heavy duty PVC fabric, ideal for single harness. Available in blue or black

Box quantity: per each



Gear Bag 50 Code: 117 022

Water resistant heavy duty PVC fabric bag with shoulder straps. Available in blue or black

Box quantity: per each



Gear Bag 100 Code: 117 027

Water resistant heavy duty PVC fabric bag with carry handle. Available in blue or black

Box quantity: per each



Gear Bag 200 Code: 117 023

Water resistant heavy duty PVC fabric bag with YKK zip and carry handles. Available in blue or black

Box quantity: per each



Gear Pouch Code: 117 028

Water resistant PVC fabric with clear PVC front panel. Available in green, red or blue

Box quantity: per each



Combi Bag Code: 117 024

Water resistant PVC fabric bag with reinforced bottom and sides. Available in green, red or blue

Box quantity: per each



Fall Arrestor (Compact) Code: 117 029

2m fall arrestor, complete with snap hook, safe load 140kg

Box quantity: per each



HILSEN GEAR RANGE



Fall Arrestor (Webbing)
Code: 117 030

2.5m/3.5m/6m webbing lanyard, complete with snap hook, safe load 140kg

Box quantity: per each



Fall Arrestor (Cable)
Code: 117 035

Available in 6m/10m/15m/20m steel wire rope lanyard, complete with snap hook, safe load 140kg

Box quantity: per each



Tooling Lanyard
Code: 117 031

For securing tooling while working at height, elasticated webbing lanyard, 8kg load capacity

Box quantity: per each



Wrist Lanyard
Code: 117 036

For securing tooling while working at height, Velcro fastening, 2kg load capacity

Box quantity: per each



Snake Bite Leggings
Code: 117 032

Durable canvas ankle to knee protection, developed with and endorsed by African Reptiles and Venom

Box quantity: per each



Cap Lamp Belt (50mm)
Code: 117 037

50mm webbing belt, cap lamp straps with eyelets and hooks, adjustable standard buckle

Box quantity: per each



Cap Lamp Belt (45mm)
Code: 117 033

45mm webbing belt, cap lamp straps with eyelets and hooks, adjustable standard buckle

Box quantity: per each



Cap Lamp Belt (Single Prong Buckle)
Code: 117 038

50mm webbing belt, cap lamp straps with eyelets and hooks, adjustable single prong buckle

Box quantity: per each



Cap Lamp Belt (Padded)
Code: 117 034

50mm webbing with waist padding, cap lamp straps with eyelets and hooks, adjustable standard buckle

Box quantity: per each



Cap Lamp Belt (Shoulder Straps)
Code: 117 039

45mm webbing belt with shoulder straps, cap lamp straps with eyelets and hooks, adjustable standard buckles

Box quantity: per each



DISPOSABLE WEAR RANGE



Type 5/6 Coverall
Code: 118 000

Full body coverall for chemical washing, medical removal and spraying. Protection against liquid chemical splashes

Box quantity: 1



Tyvek Classic Coverall
Code: 118 005

Full body coverall for protection against liquid chemical splashes

EN149:2001

Box quantity: 1



Disposable Lab Coat
Code: 118 001

Non-woven disposable lab coat

Box quantity: 1



Disposable Mob Caps
Code: 118 006

Available in white, green, blue, yellow, orange, red or pink. Available in single or double elastic

Box quantity: 1



Disposable Beard Covers
Code: 118 002

Non-woven polypropylene white beard covers

Box quantity: 1



Disposable Shoe Covers
Code: 118 007

Waterproof, double elastic disposable shoe covers

Box quantity: 1 pair



Disposable Plastic Sleeves
Code: 118 003

Provides protection against contamination, available in blue or white

Box quantity: 1 pair



Disposable Plastic Apron
Code: 118 008

Disposable plastic apron suitable for general protection against liquids and other substances

Box quantity: 100



Basic Coverall
Code: 118 004

Polypropylene material, soft and breathable, protects against dust and dirt. Available in white or blue

Box quantity: 1



Type 4/5/6 Coverall
Code: 118 009

Polypropylene coated, good barrier against particles such as asbestos, dust and light mist

EN14605/EN ISO 13982-1/EN13034

Box quantity: 1



CLEANING MATERIALS RANGE



Orange PVC Traffic Cone Code: 123 000

Available in small, medium or large. Orange with reflective tape or blue with reflective tape

Box quantity: 1



Hi-Viz PVC Traffic Cone Code: 123 004

Available in small, medium or large. Hi-viz lime with reflective tape, yellow with reflective tape or red with reflective tape

Box quantity: 1



Fold-Away Traffic Cone Code: 123 001

Available in small or large, orange with reflective tape or red with reflective tape

Box quantity: 1



Rotating Emergency Light Code: 123 005

Orange light available in flash strobe, strobe light or cordless strobe

Box quantity: 1



Warning Triangle Code: 123 002

Steel or plastic warning triangle for road safety

Box quantity: 1



Barrier Tape Code: 123 006

Reflective barrier tape, available in high reflective red and white or black and yellow

Box quantity: 1



Tow Ropes Code: 123 003

High quality and high durability tow ropes, available in various colours and lengths

Box quantity: 1



Load Straps Code: 123 007

High quality and high durability load straps and ratchet straps, 35mm x 6m or available in other lengths

Box quantity: 1





INVESTIMENTOS

✉ **info-mz@nskit.co.za**

☎ **+258 21 0871 95**

📞 **+258 84 799 2826**

📍 **Rua Carlos Albers, N° 138,
R/C Polana Cimento,
Maputo**

